

JUPITER-80

Roland



Better Life with Music



Welcome to a new world of expression, realism, and mind-blowing creativity.

Introducing the ultimate live-performance synthesizer... the JUPITER-80, powered by SuperNATURAL sounds and groundbreaking Behavior Modeling technology.

JUPITER-80

Sounds that are real and alive.... Expression that is rich and natural.... Instrument designers have pursued this quest since the birth of electronic musical instruments. Building on decades of research, Roland's JUPITER-80 finally realizes the dream. The combination of SuperNATURAL sounds and new Behavior Modeling technology delivers unprecedented realism and expression of traditional instrument sounds — and all inside the same keyboard that also offers a powerful cutting-edge synthesis engine for electronic music. Simply put, the JUPITER-80 is the ultimate live performance synthesizer. Play the JUPITER-80 today, and prepare to be blown away!

SuperNATURAL sound — ultimate expression and authenticity



With Roland's proprietary SuperNATURAL sound throughout, the JUPITER-80 puts a world of authentic traditional and ethnic acoustic instruments at your fingertips. Keyboards, brass, woodwinds, stringed instruments, percussion, and much more.... New Behavior Modeling technology even let's you tap the expert performance techniques of master players on their respective instruments. SuperNATURAL also delivers state-of-the-art synthesis to give you a vast palette of electronic sounds spanning yesterday, today, and tomorrow. The JUPITER-80 finally delivers the best of all worlds in a single, highly expressive musical instrument.

SuperNATURAL

Taking advantage of Behavior Modeling technology, SuperNATURAL is Roland's exclusive sound set that achieves a new level of realism and expression that were difficult to realize with previous sound generators.



Behavior Modeling Technology

Not only physical modeling of the instruments, Roland takes it a step further by modeling the instrument's distinctive behavior that responds to how the performer plays, resulting in true-to-life, expressive sounds in realtime.

When you play the JUPITER-80, you'll immediately be amazed at the quality and realism of its rich SuperNATURAL acoustic sounds, and how naturally and organically they respond and evolve in response to your touch and phrasing. You also get SuperNATURAL synth sounds ranging from fat vintage analog to shimmering digital textures.

Examples of SuperNATURAL acoustic tones:

SuperNATURAL

Reproducing acoustic instruments with SuperNATURAL

Piano sounds...



Grand piano sounds exhibit natural decay and seamless tonal changes in response your touch. You can adjust a variety of parameters, such as Stereo Width and Hammer Noise.

String sounds...



Pitches transition naturally from note to note when playing tied legato-style melody lines. Effortlessly realize portamento, pizzicato, and other articulations unique to string instruments — no special playing technique required.

Brass sounds...



The JUPITER-80 faithfully reproduces the dynamic tonal changes unique to brass instruments — including the transitions of harmonic overtones with a drastic raise in pitch and the half-valve sound when playing trills.

Acoustic guitar sounds...



Reproduce chord fingerings, strumming, and melody performances of steel- and nylon-string guitars naturally and easily — right from your keyboard.

Behavior Modeling Technology

- Performance-related information**
- Keyboard Phrasing
 - Tempo
 - Chords or Melody
 - Legato
 - Staccato

- Control signals**
- Pitch Bend
 - Modulation
 - D Beam
 - Assignable Buttons (S1, S2)
 - Control Pedals (1, 2)





The JUPITER-80 is designed from the ground up for live performance, with intuitive operation and instant access to any function on stage.

JUPITER-80 Live Sets group up to four SuperNATURAL tones together into a rich, expressive compound instrument Part — complete with multi-effects. You can split and layer a total of four Parts — Upper Live Set, Lower Live Set, Solo part, and Percussion part — across user-definable keyboard zones as desired. Then save the entire setup as one of many master Registrations for instant recall during performances.

The JUPITER-80 takes your live performances into a new dimension.



Color-coded buttons

The JUPITER-80's signature color-coded buttons let you instantly view and change the SuperNATURAL sounds across four zoneable keyboard parts.



Part Balance sliders

The Part Balance sliders let you quickly adjust the volumes of each of the four parts.



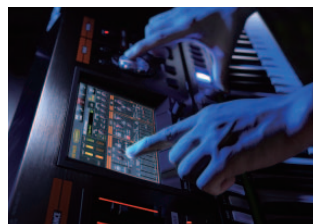
Registration buttons

Optimally positioned Registration buttons let you easily switch on the fly between different combinations of the four Parts — including Upper and Lower Live Set stacks of SuperNATURAL sounds.



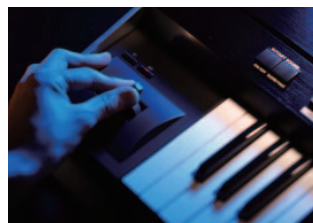
Exceptionally expressive keyboard

The 76-key semi-weighted keyboard provides excellent playability, giving you control over the subtle nuances of the JUPITER-80's amazing tones.



Intuitive touch display operations

The TFT full-color touch screen and front-panel controls work together for fast, friendly operation.



Diverse range of live controllers

Create dynamic live performances with the modulation lever, assignable buttons, and D Beam.



Extensive foot-control features

Multiple foot pedal functions (CTRL 1, CTRL 2, and HOLD) give you additional control over a variety of expressive performance parameters in real time.



Song player/recorder function

The built-in USB flash-memory-based audio player/recorder lets you create and play backing tracks right onboard.

Specifications

Keyboard Section	<ul style="list-style-type: none"> ■ Keyboard 76 keys (with velocity and channel aftertouch)
Sound Generator Section	<ul style="list-style-type: none"> ■ Maximum Polyphony 256 voices (varies according to the sound generator load) ■ Parts 4 parts (Upper, Lower, Solo, Percussion) ■ Registrations 256 (including pre-loaded registrations) ■ Live Sets 2,560 (including pre-loaded Live Sets) ■ Effects <for Live Set (Upper/Lower part)> Multi-Effects (MFX): 4 units (parallel connection only), 76 types per each Upper/Lower (total: 8 units), Reverb: 1 unit, 5 types per each Upper/Lower (total: 2 units) <for Solo part/Percussion part> Compressor + Equalizer + Delay: 1 set per each Solo/Percussion (total: 2 sets), Reverb: 1 unit, 5 types, Master Effects: 4-Band Equalizer: 1 unit
USB Memory Song Player/Recorder Section	<ul style="list-style-type: none"> ■ Tracks 1 stereo track ■ Playable File Format Audio File: WAV, AIFF, MP3 ■ Recording File Format Audio File: WAV (44.1 kHz, 16-bit Linear, stereo) ■ Effects 4-Band Equalizer: 1 unit ■ External Memory USB flash memory (sold separately)
Connectors	<ul style="list-style-type: none"> ■ PHONES stereo 1/4" phone type ■ MAIN OUT L, R (XLR type) ■ MAIN OUT L/MONO, R (1/4" TRS phone type) ■ SUB OUT L, R (1/4" phone type) ■ AUDIO IN stereo miniature phone type ■ DIGITAL AUDIO OUT COAXIAL ■ FOOT PEDAL HOLD, CTRL 1, CTRL 2 ■ MIDI IN, OUT, THRU ■ USB COMPUTER Audio/MIDI ■ USB Memory ■ AC IN
Dimensions/Weight	<ul style="list-style-type: none"> ■ Dimensions 1,231 (W) x 439 (D) x 140 (H) mm (48-1/2" x 17-5/16" x 5-1/2") ■ Weight 17.7 kg (39 lbs. 1 oz.)
Other	<ul style="list-style-type: none"> ■ Arpeggiator Preset: 128 styles, User: 128 styles ■ Harmony Intelligence 17 types ■ Controllers D Beam controller, Pitch Bend/Modulation lever, Assignable buttons (S1, S2), Assignable knobs (E1-E4), PART LEVEL sliders (PERC, LOWER, UPPER, SOLO) ■ Display Graphic Color LCD 800 x 480 dots (touch screen) ■ Power Consumption 25 W ■ Included Accessories Owner's Manual, CD-ROM (USB Audio/MIDI driver), DVD-ROM (SONAR LE), USB Memory Protector, Power Cord

*Use USB flash memory sold by Roland. We cannot guarantee operation if other products are used.

JUPITER-80



Options



COSM

Once a musical instrument generates sound vibrations, it reaches the human ear through various mediating objects, each of which significantly affects the sound. The material and configuration of the instrument, the electric/magnetic amplifying system, the air and the reverberation of the room all affect the final sound. Sound modeling, the latest DSP technology, "virtually" reconstructs these objects. Roland's breakthrough Composite Object Sound Modeling (COSM) uses the advantages of multiple modeling methods and succeeds in accurately emulating existing sounds, as well as producing sounds that have never before been created.

MIDI VISUAL CONTROL

MIDI Visual Control is an internationally-used recommended practice that was added to the MIDI specification so that visual expression could be linked with musical performance. Video equipment that is compatible with MIDI Visual Control can be connected to electronic musical instruments via MIDI in order to control video equipment in tandem with a performance.

V-LINK

Using V-LINK, musicians can "play" video from their electronic instrument — or even control a live video camera — when used with Roland's video products. With V-LINK, musicians have a powerful interface for realtime audio and video integration.

<http://jupiter-80.com/>



Roland
— WE DESIGN THE FUTURE —

Visit us online at www.Roland.com

●All specifications and appearances are subject to change without notice. ●All trademarks are the property of their respective companies. ●ROLAND, BOSS, COSM, and SuperNATURAL are either registered trademarks or trademarks of Roland Corporation in the United States and/or other countries. ●CAKEWALK and SONAR are either registered trademarks or trademarks of Cakewalk, Inc. in the United States. ●"JUPITER" is a registered trademark of and is licensed by K.H.S. MUSICAL INSTRUMENT CO. LTD. in the United States and other countries.